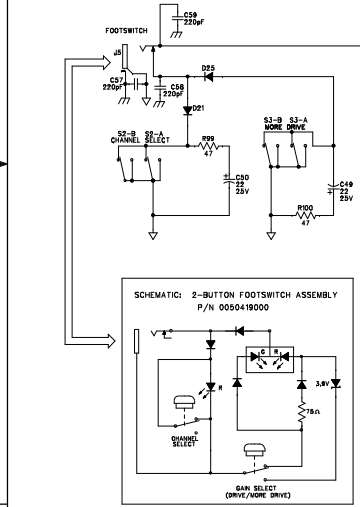
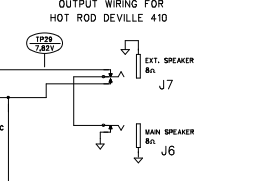
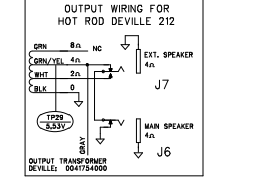
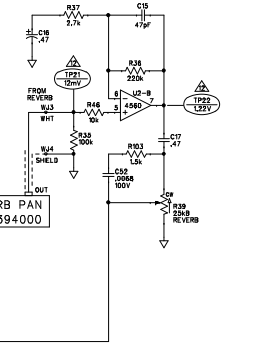
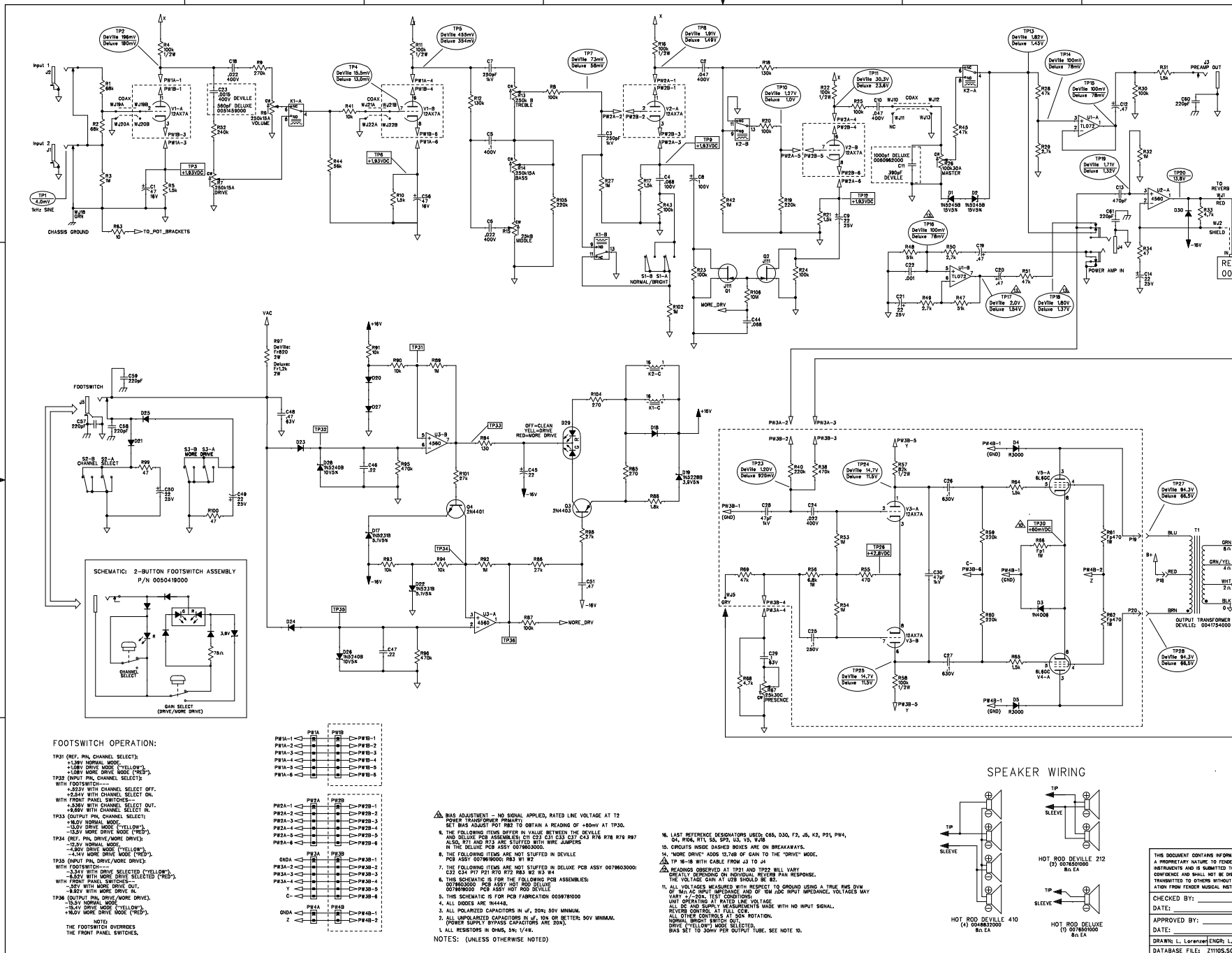


REVISIONS			
REV.	DESCRIPTION	DATE	APPROVED
A	PR1110	26-MAR-10	LEL
B	EC 4472	15-06-10	L E L



FOOTSWITCH OPERATION:

TP3 (REF. PH. CHANNEL SELECT):
 +1.8V NORMAL MODE (YELLOW)
 +1.8V MORE DRIVE MODE (YELLOW)
 +1.8V MORE DRIVE MODE (RED)
 TP33 (OUTPUT PH. CHANNEL SELECT)
 WITH FOOTSWITCH: +2.2V WITH CHANNEL SELECT OFF.
 +2.2V WITH CHANNEL SELECT ON.
 WITH FRONT PANEL SWITCHES:
 TP33 (OUTPUT PH. CHANNEL SELECT):
 +2.2V WITH CHANNEL SELECT OFF.
 +2.2V WITH CHANNEL SELECT ON.
 TP33 (OUTPUT PH. CHANNEL SELECT):
 +2.2V WITH CHANNEL SELECT OFF.
 +2.2V WITH CHANNEL SELECT ON.
 TP33 (OUTPUT PH. CHANNEL SELECT):
 +2.2V WITH CHANNEL SELECT OFF.
 +2.2V WITH CHANNEL SELECT ON.

TP4 (REF. PH. DRIVE/MORE DRIVE):
 +2.5V NORMAL MODE (YELLOW)
 +2.5V MORE DRIVE MODE (YELLOW)
 +2.5V MORE DRIVE MODE (RED)
 TP43 (OUTPUT PH. DRIVE/MORE DRIVE):
 +2.5V NORMAL MODE (YELLOW)
 +2.5V MORE DRIVE MODE (YELLOW)
 +2.5V MORE DRIVE MODE (RED)

NOTE:
 THE FOOTSWITCH OVERRIDES THE FRONT PANEL SWITCHES.

PH11-1	PH12	PH13	PH14	PH15	PH16	PH17	PH18	PH19	PH20
PH11-1	PH12	PH13	PH14	PH15	PH16	PH17	PH18	PH19	PH20
PH21-1	PH22	PH23	PH24	PH25	PH26	PH27	PH28	PH29	PH30
PH31-1	PH32	PH33	PH34	PH35	PH36	PH37	PH38	PH39	PH40
PH41-1	PH42	PH43	PH44	PH45	PH46	PH47	PH48	PH49	PH50
PH51-1	PH52	PH53	PH54	PH55	PH56	PH57	PH58	PH59	PH60
PH61-1	PH62	PH63	PH64	PH65	PH66	PH67	PH68	PH69	PH70
PH71-1	PH72	PH73	PH74	PH75	PH76	PH77	PH78	PH79	PH80
PH81-1	PH82	PH83	PH84	PH85	PH86	PH87	PH88	PH89	PH90
PH91-1	PH92	PH93	PH94	PH95	PH96	PH97	PH98	PH99	PH100

Δ BIAS ADJUSTMENT - NO SIGNAL APPLIED, RATED LINE VOLTAGE AT I2 POWER TRANSFORMER PRIMARY. SET BIAS ADJUST POT R81 TO OBTAIN A READING OF +50mV AT TP30.

5. THE FOLLOWING ITEMS DIFFER IN VALUE BETWEEN THE DEVILLE AND DELUXE PCB ASSY'S: C11, C12, C13, C14, R76, R78, R79, R87, R88, R91 AND R92 ARE STUFFED WITH WIRE JUMPS IN THE DELUXE PCB ASSY 007960000.

6. THE FOLLOWING ITEMS ARE NOT STUFFED IN DEVILLE PCB ASSY 007960000: R83, R11, R97.

7. THE FOLLOWING ITEMS ARE NOT STUFFED IN DELUXE PCB ASSY 007960000: C13, C24, R11, R21, R76, R78, R82, R83, R84, R85, R86, R87, R88, R89, R90, R91, R92, R93, R94, R95, R96, R97, R98, R99, R100.

8. THIS SCHEMATIC IS FOR THE FOLLOWING PCB ASSEMBLIES: 007960000 PCB ASSY HOT ROD DELUXE 007960000 PCB ASSY HOT ROD DEVILLE

9. THIS SCHEMATIC IS FOR PCB FABRICATION 005978000

4. ALL DIMENSIONS ARE DIMMETERS.

5. THIS SCHEMATIC IS FOR PCB FABRICATION 005978000

6. ALL POLARIZED CAPACITORS IN μF, 50% OR BETTER; 50V MINIMUM.

7. ALL UNPOLARIZED CAPACITORS IN μF, 10% OR BETTER; 50V MINIMUM.

8. ALL RESISTORS IN OHMS, 5% 1/4W.

NOTES: (UNLESS OTHERWISE NOTED)

16. LAST REFERENCE DESIGNATORS USED: C66, C30, F2, J6, K2, P21, P4, Q4, R04, R11, S6, SP2, S5, V5, W5, X5.

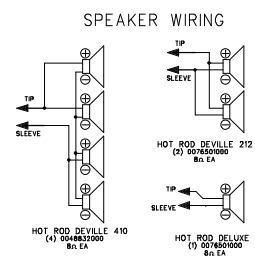
17. REASONING OBSERVED AT TP31 AND TP32 WILL VARY GREATLY DEPENDING ON INDIVIDUAL REVERB PAN RESPONSE.

18. CROUSE HIDE DIMMED BUSES ARE ON BREAKAWAYS.

19. "MORE DRIVE" ADDS 12.7dB OF GAIN TO THE "DRIVE" MODE.

20. TP 18-B WITH CABLE FROM J3 TO J4.

21. ALL VOLTAGES MEASURED WITH RESPECT TO GROUND USING A TRUE RMS DVM OF 100 KΩ INPUT IMPEDANCE AND OF 500 Ω AC INPUT MECHANICAL VOLTAGE MAY VARY ±20%. TEST CONDITIONS: UNIT OPERATING AT RATED LINE VOLTAGE. ALL DC AND SUPPLY MEASUREMENTS MADE WITH NO INPUT SIGNAL. ALL OTHER CONTROLS AT 50% ROTATION. NORMAL BRIGHT SWITCH OUT. DRIVE (YELLOW) MODE SELECTED. BIAS SET TO 30mV PER OUTPUT TUBE. SEE NOTE 10.



THIS DOCUMENT CONTAINS INFORMATION OF A PROPRIETARY NATURE TO FENDER MUSICAL INSTRUMENTS AND IS SUBMITTED TO YOU IN CONFIDENCE AND SHALL NOT BE DISCLOSED OR TRANSMITTED TO OTHERS WITHOUT AUTHORIZATION FROM FENDER MUSICAL INSTRUMENTS.

CHECKED BY: _____
 DATE: _____

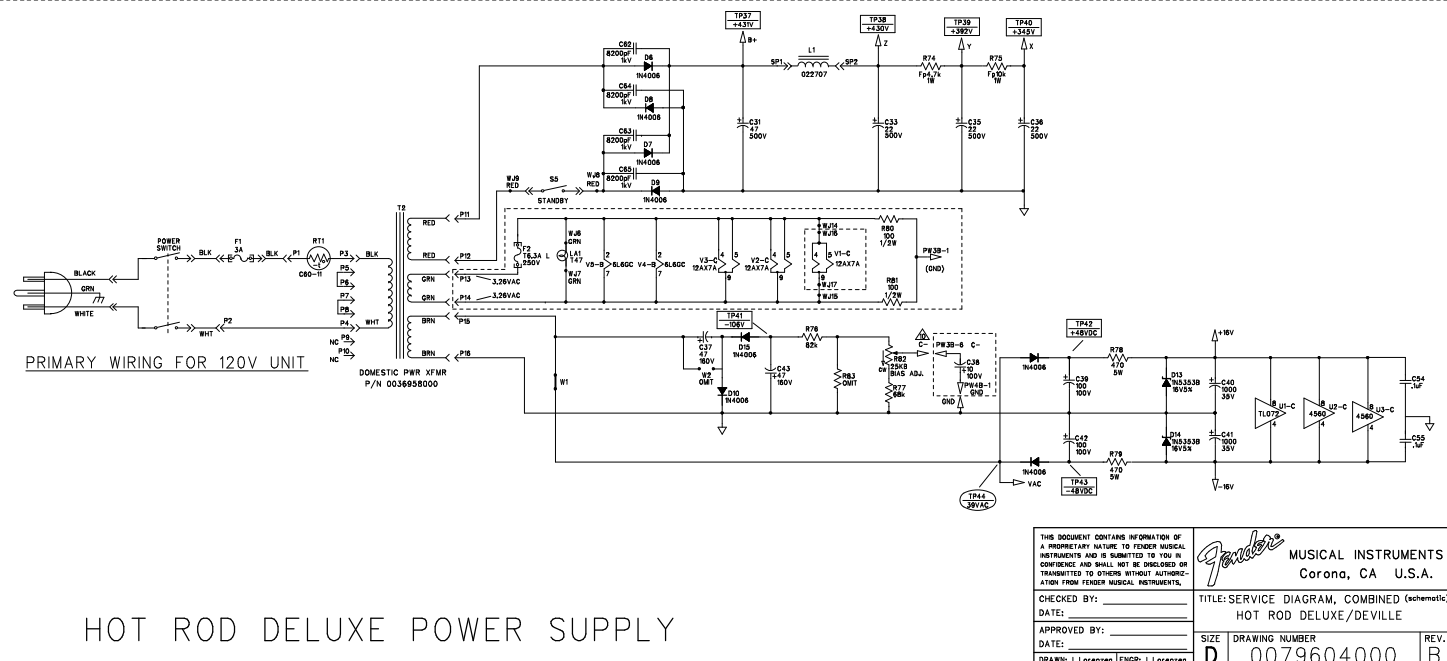
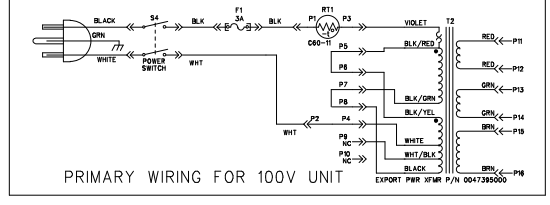
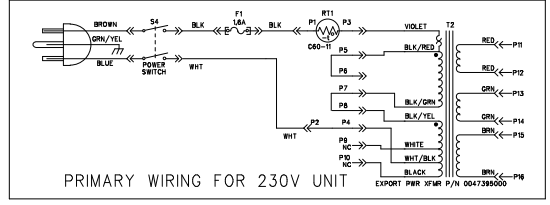
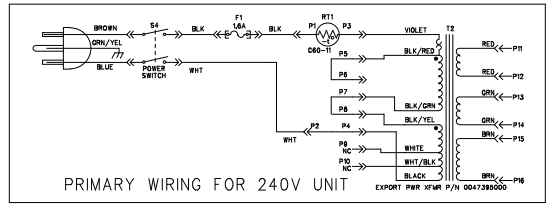
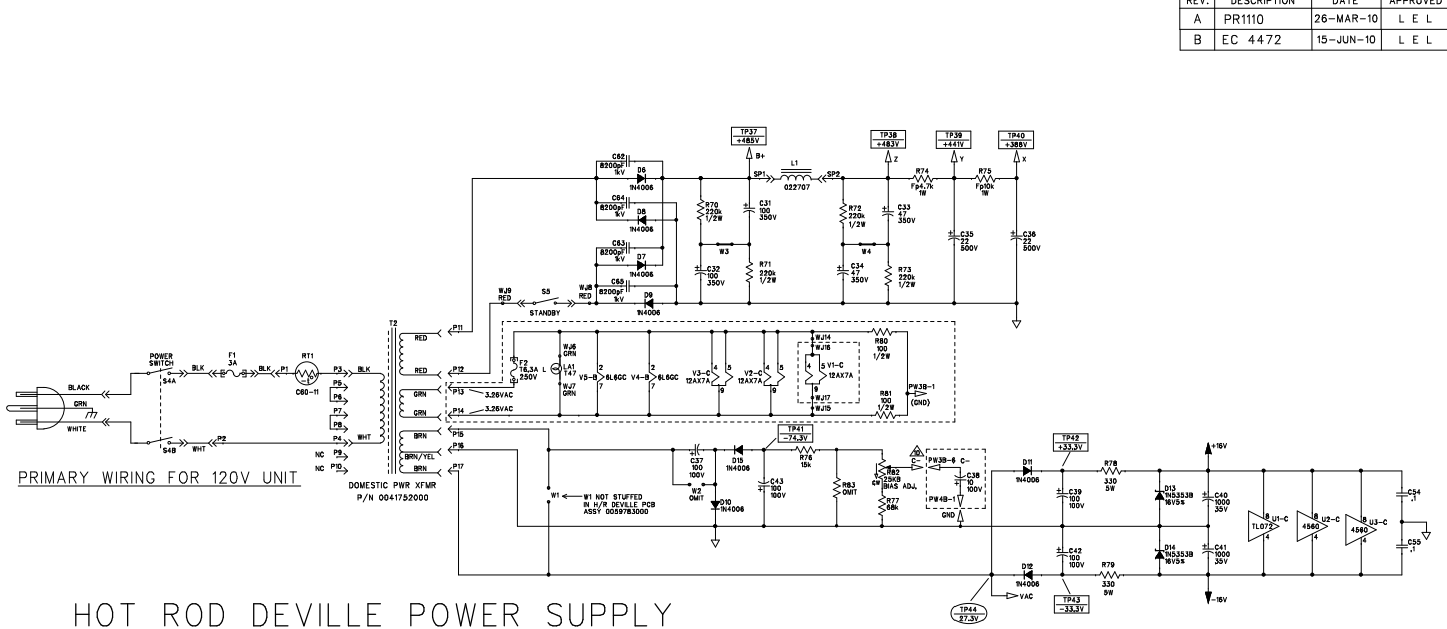
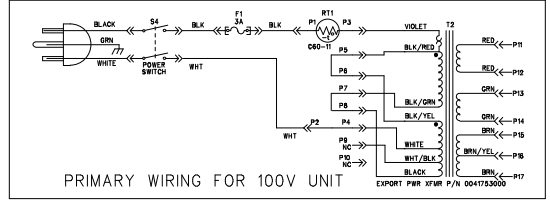
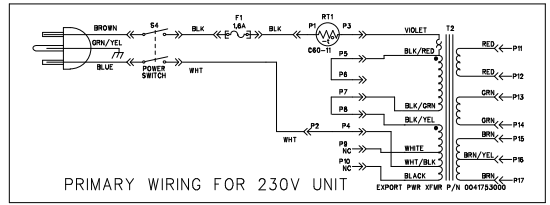
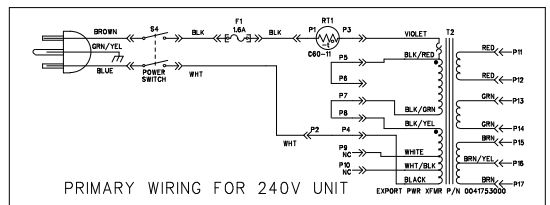
APPROVED BY: _____
 DATE: _____

DRAWN: L. Lorenzen/ENGR L. Lorenzen
 DATABASE FILE: Z1105.SCH

TITLE: SERVICE DIAGRAM, COMBINED (schematic)
 HOT ROD DELUXE/DEVILLE III

SIZE: DRAWING NUMBER: **D 0079604000** REV: **B**
 RELEASE DATE: 10-JUN-10 SHEET: 1 OF 3

REVISIONS			
REV.	DESCRIPTION	DATE	APPROVED
A	PR1110	26-MAR-10	L E L
B	EC 4472	15-JUN-10	L E L



THIS DOCUMENT CONTAINS INFORMATION OF A PROPRIETARY NATURE TO FENDER MUSICAL INSTRUMENTS AND IS SUBMITTED TO YOU IN CONFIDENCE AND SHALL NOT BE DISCLOSED OR TRANSMITTED TO OTHERS WITHOUT AUTHORIZATION FROM FENDER MUSICAL INSTRUMENTS.

Fender MUSICAL INSTRUMENTS
Corona, CA U.S.A.

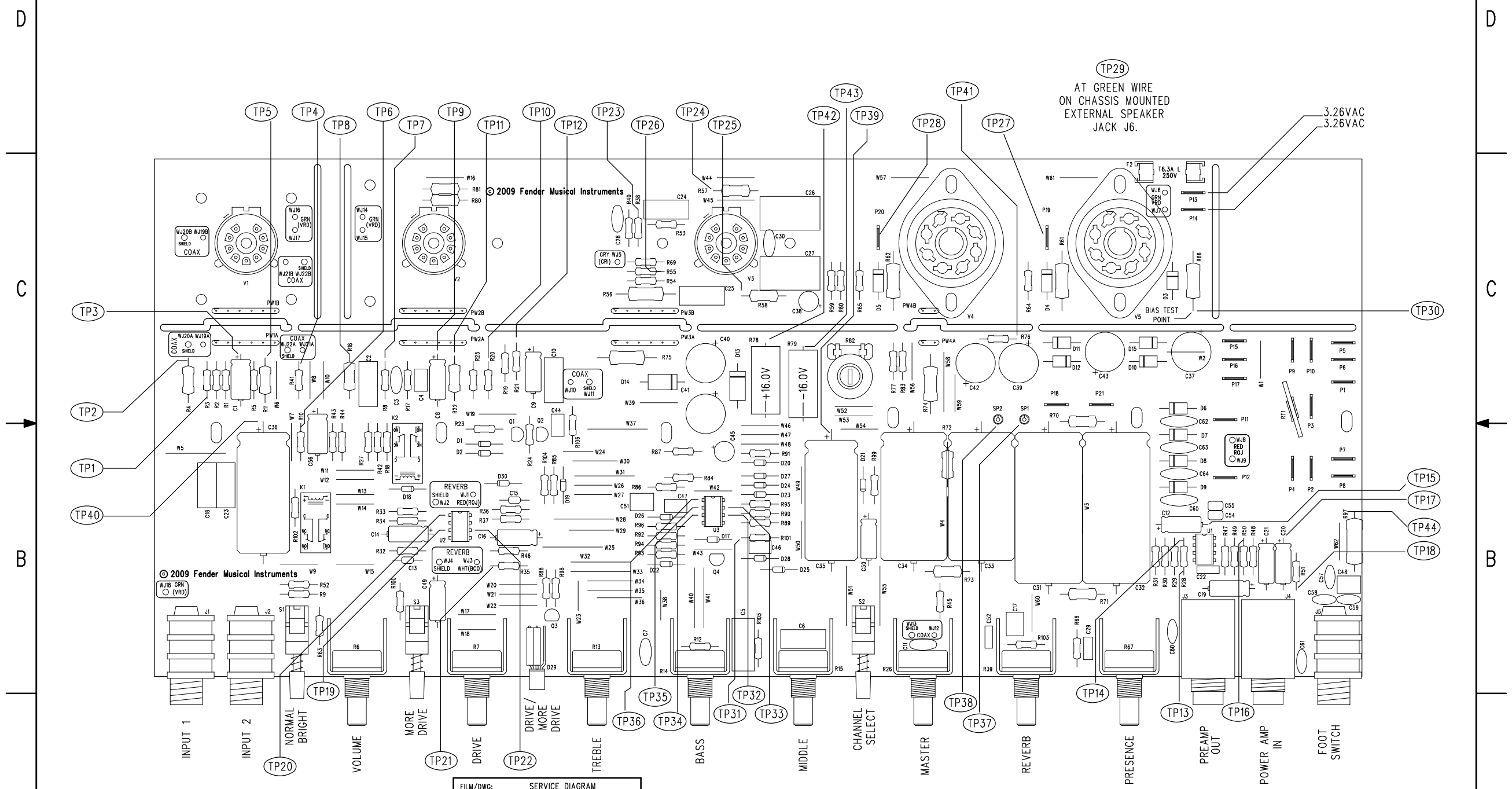
CHECKED BY: _____
DATE: _____
APPROVED BY: _____
DATE: _____
DRAWN: L.Lorenzen ENGR: L.Lorenzen
DATABASE FILE: Z1105.SCH

TITLE: SERVICE DIAGRAM, COMBINED (schematic)
HOT ROD DELUXE/DEVILLE

SIZE: D DRAWING NUMBER: 0079604000 REV: B
RELEASE DATE: 15-JUN-10 SHEET: 2 OF 3

NOTES: SEE SHEET 1

REVISIONS			
REV.	DESCRIPTION	DATE	APPROVED
A	PR1110	26-MAR-10	LEL
B	EC 4472	15-JUN-10	LEL



FILM/DWG: SERVICE DIAGRAM
 DATABASE: Z485P.PCB DATE: 18-MAR-09

3. SEE PAGE 1 FOR NOTES AND TEST CONDITIONS
2. WIRES NOT SHOWN FOR CLARITY
1. PCB SHOWN BEFORE POWER AMP BREAKAWAY IS INSTALLED IN CHASSIS

NOTES: (UNLESS OTHERWISE NOTED)

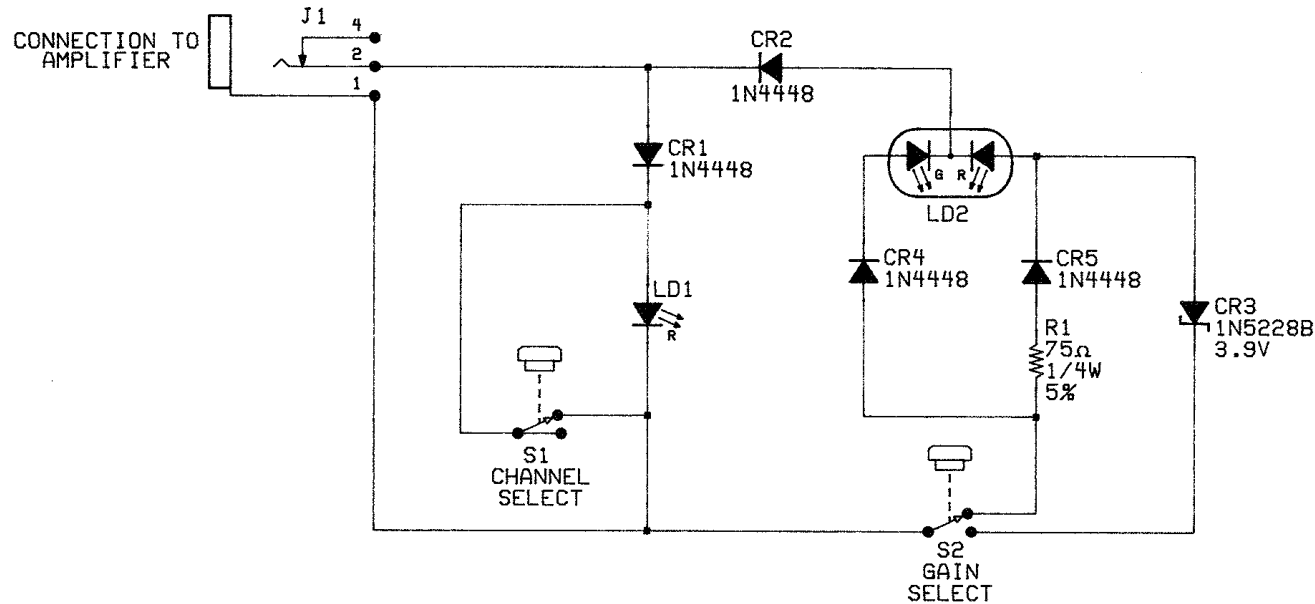
THIS DOCUMENT CONTAINS INFORMATION OF A PROPRIETARY NATURE TO FENDER MUSICAL INSTRUMENTS AND IS SUBMITTED TO YOU IN CONFIDENCE AND SHALL NOT BE DISCLOSED OR TRANSMITTED TO OTHERS WITHOUT AUTHORIZATION FROM FENDER MUSICAL INSTRUMENTS.

Fender MUSICAL INSTRUMENTS
 Corona, CA U.S.A.

CHECKED BY: _____	TITLE: SERVICE DIAGRAM, COMBINED (PCB assy)		
DATE: _____	HOT ROD DELUXE/DEVILLE III		
APPROVED BY: _____	SIZE	DRAWING NUMBER	REV.
DATE: _____	C	0079604000	B
DRAWN: L. LORENZEN	ENGR: L. LORENZEN	RELEASE DATE: 18-SEP-02	SHEET 3 OF 3
DATABASE FILE: Z1110-P.PCB			

SERVICE MANUAL DOCUMENT

JUNE 25, 2010



DATABASE FILE:		PROPRIETARY		MUSICAL INSTRUMENTS 2621 Research Drive Corona, CA 91720	
CHECKED BY:		THIS DRAWING DOCUMENT CONTAINS INFORMATION WHICH IS PROPRIETARY TO AND IS THE PROPERTY OF THE FENDER MUSICAL INSTRUMENTS CO. AND MAY NOT BE USED, REPRODUCED OR DISCLOSED IN ANY MANNER WITHOUT THE EXPRESSED WRITTEN CONSENT FROM:			
DATE:		FENDER MUSICAL INSTRUMENTS CO. REGIONAL HEADQUARTERS 2621 RESEARCH DRIVE CORONA, CALIFORNIA 91720 STOMP ON IT.		TITLE: SCHEMATIC DIAGRAM, FOOTSWITCH, CH/GA.	
APPROVED:		NEXT HIGHER ASSEMBLY: P/N 050417 PCB ASSY FTSW CH/GA		SIZE	DRAWING NUMBER
DATE				B	050415
TOLERANCES: UNLESS OTHERWISE NOTED		DRAWN		ENGR:	REV. A
X.X	±0.050"	SCALE: NONE.		CREATED:	SHEET 1 OF 1
X.XX	±0.010"	PLOTTED:			
X.XXX	±0.005"				
ANGLES	±0.500°				