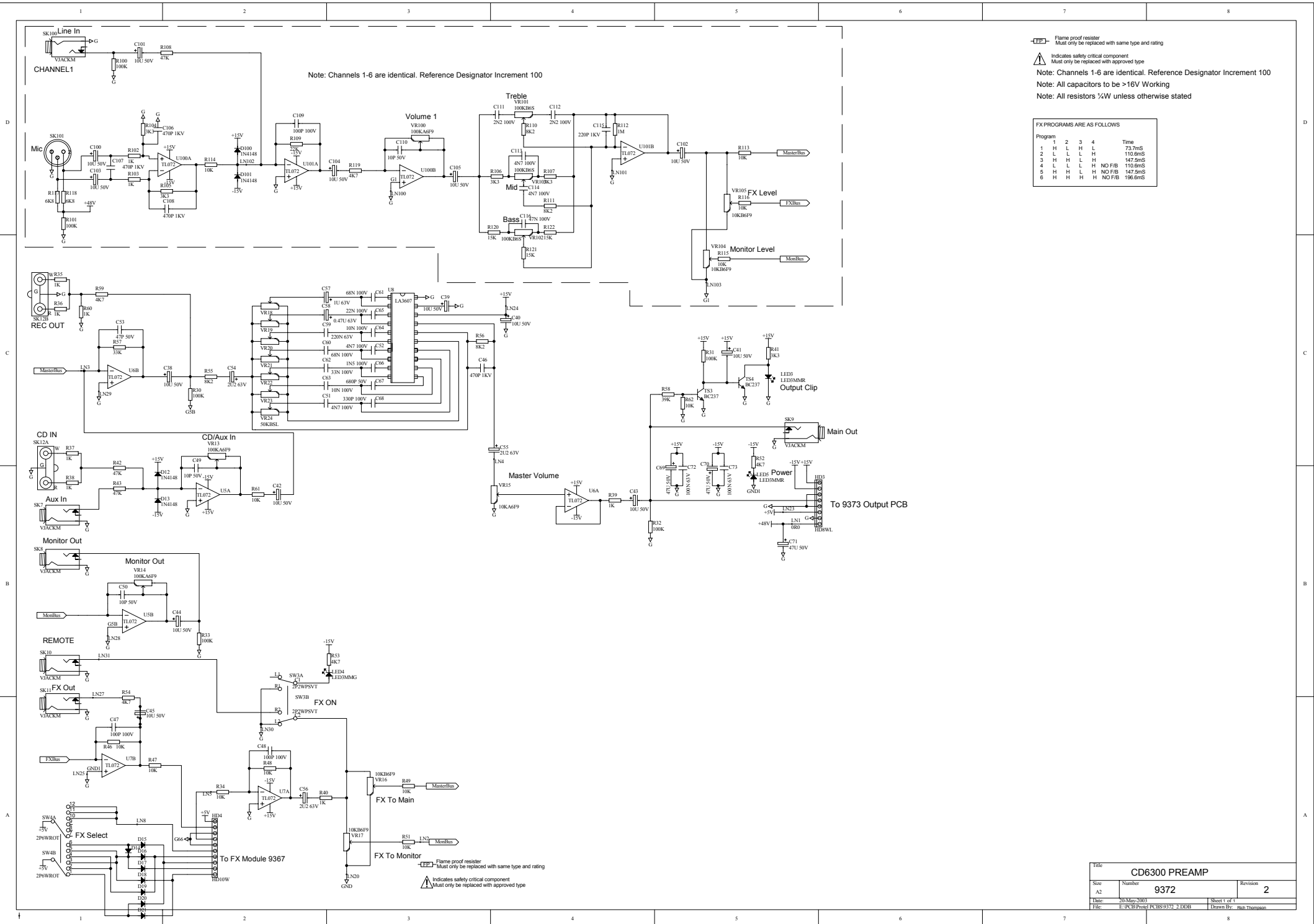


# **CD630M**

## ***Service Information***

**Laney**  
*Classic British Amplification*

**Newlyn Road, Cradley Heath, West Midlands. B64 6BE**  
**[www.laney.co.uk](http://www.laney.co.uk)**



Note: Channels 1-6 are identical. Reference Designator Increment 100

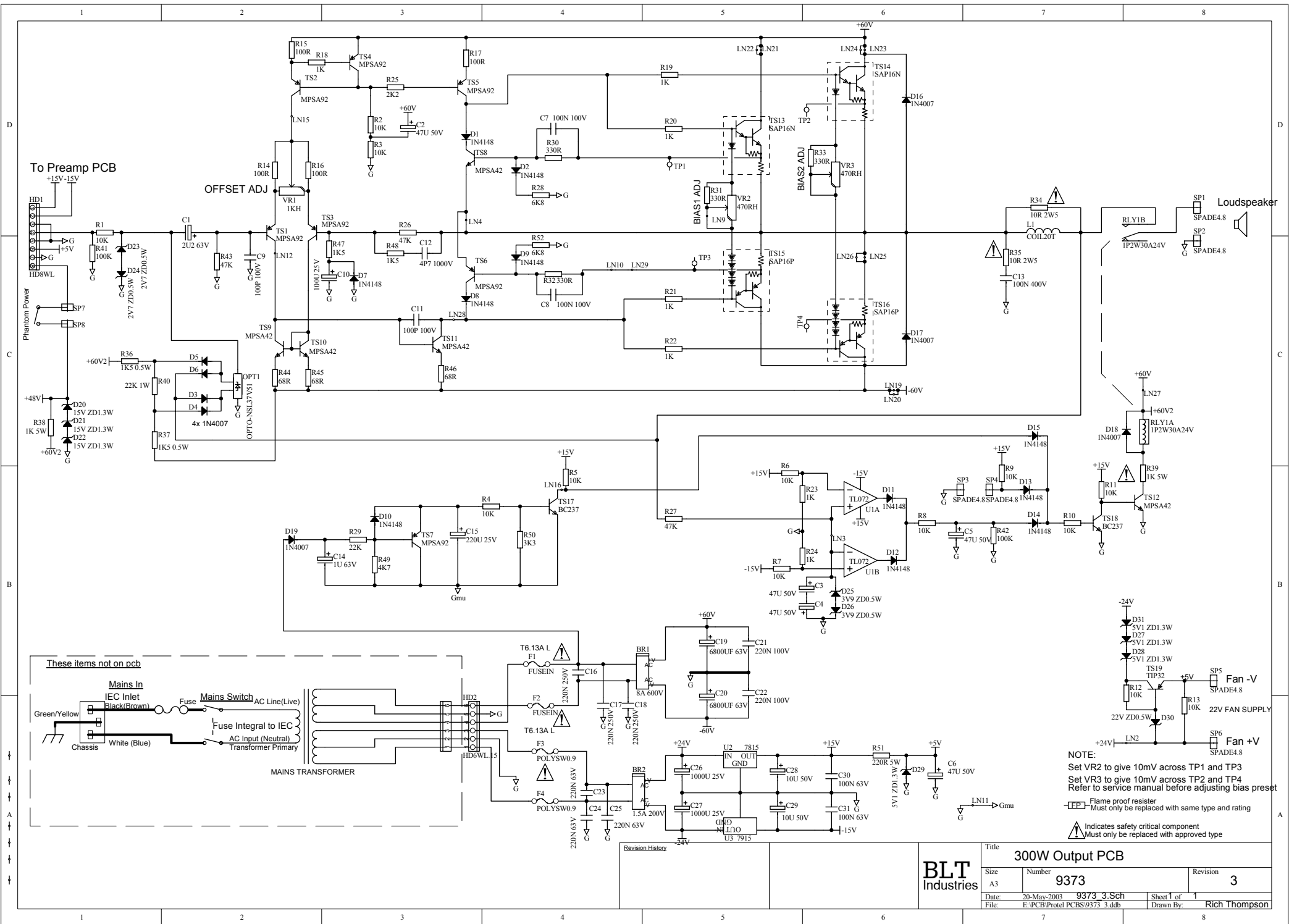
Flame proof resistor  
 Must only be replaced with same type and rating  
 Indicates safety critical component  
 Must only be replaced with approved type  
 Note: Channels 1-6 are identical. Reference Designator Increment 100  
 Note: All capacitors to be >16V Working  
 Note: All resistors 1/4W unless otherwise stated

FX PROGRAMS ARE AS FOLLOWS

Program	1	2	3	4	Time
1	H	L	H	L	73.7mS
2	L	L	L	H	110.6mS
3	H	H	L	H	147.5mS
4	L	L	L	H	110.6mS
5	H	H	L	H	NO F/B
6	H	H	H	H	147.5mS

Flame proof resistor  
 Must only be replaced with same type and rating  
 Indicates safety critical component  
 Must only be replaced with approved type

Title			
CD6300 PREAMP			
Size	Number	Revision	
A2	9372		2
Date:	20 May 2003	Sheet 1 of 1	
File:	E:\PCB\Print\FX\INS9372_2.DDB	Drawn By:	ash.thompson



To Preamp PCB

OFFSET ADJ

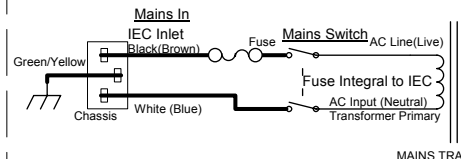
BIAS ADJ

Loudspeaker

Phantom Power

+48V  
R38 1K 5W  
D20 15V ZD1.3W  
D21 15V ZD1.3W  
D22 15V ZD1.3W

These items not on pcb



MAINS TRANSFORMER

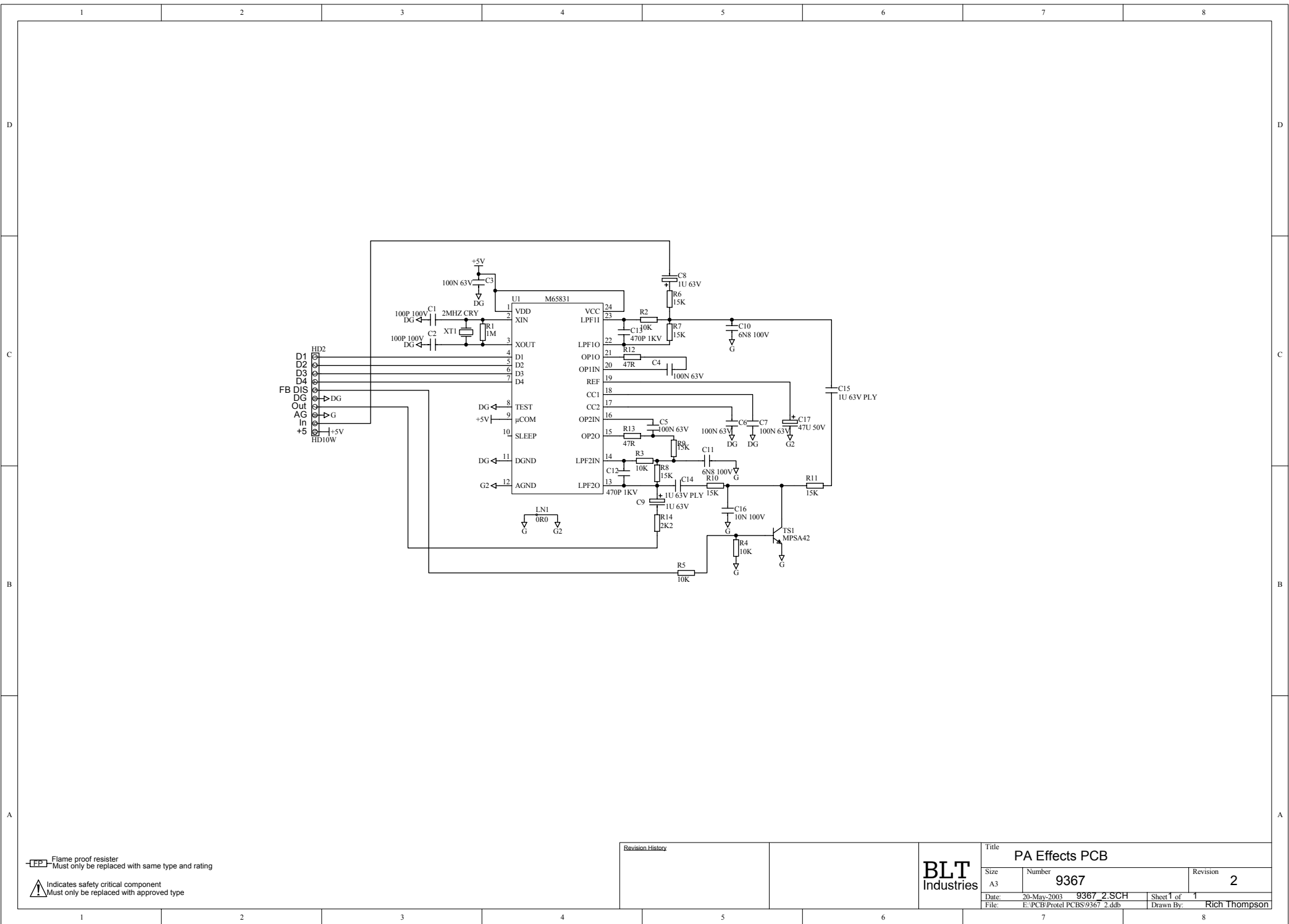
NOTE:  
Set VR2 to give 10mV across TP1 and TP3  
Set VR3 to give 10mV across TP2 and TP4  
Refer to service manual before adjusting bias preset

⚠ Flame proof resistor  
Must only be replaced with same type and rating

⚠ Indicates safety critical component  
Must only be replaced with approved type

Revision	Description

<b>BLT Industries</b>		
<b>Title</b> 300W Output PCB		
<b>Size</b> A3	<b>Number</b> 9373	<b>Revision</b> 3
<b>Date</b> 20-May-2003	<b>9373_3.Sch</b>	<b>Sheet 1 of 1</b>
<b>File</b> E:\PCB\Protel PCBs\9373_3.dcb	<b>Drawn By</b>	<b>Rich Thompson</b>



**FFP** - Flame proof resistor  
Must only be replaced with same type and rating

**!** Indicates safety critical component  
Must only be replaced with approved type

Revision History	

Title		PA Effects PCB	
Size	Number	Revision	
A3	9367	2	
Date:	20-May-2003	9367 2.SCH	Sheet 1 of 1
File:	E:\PCB\Protel PCBs\9367 2.ddb	Drawn By:	Rich Thompson

