

NOTE:  
 Output amplifier 9353 build option C  
 Miss out C3,R4,R6,R8,R9. Fit LN1

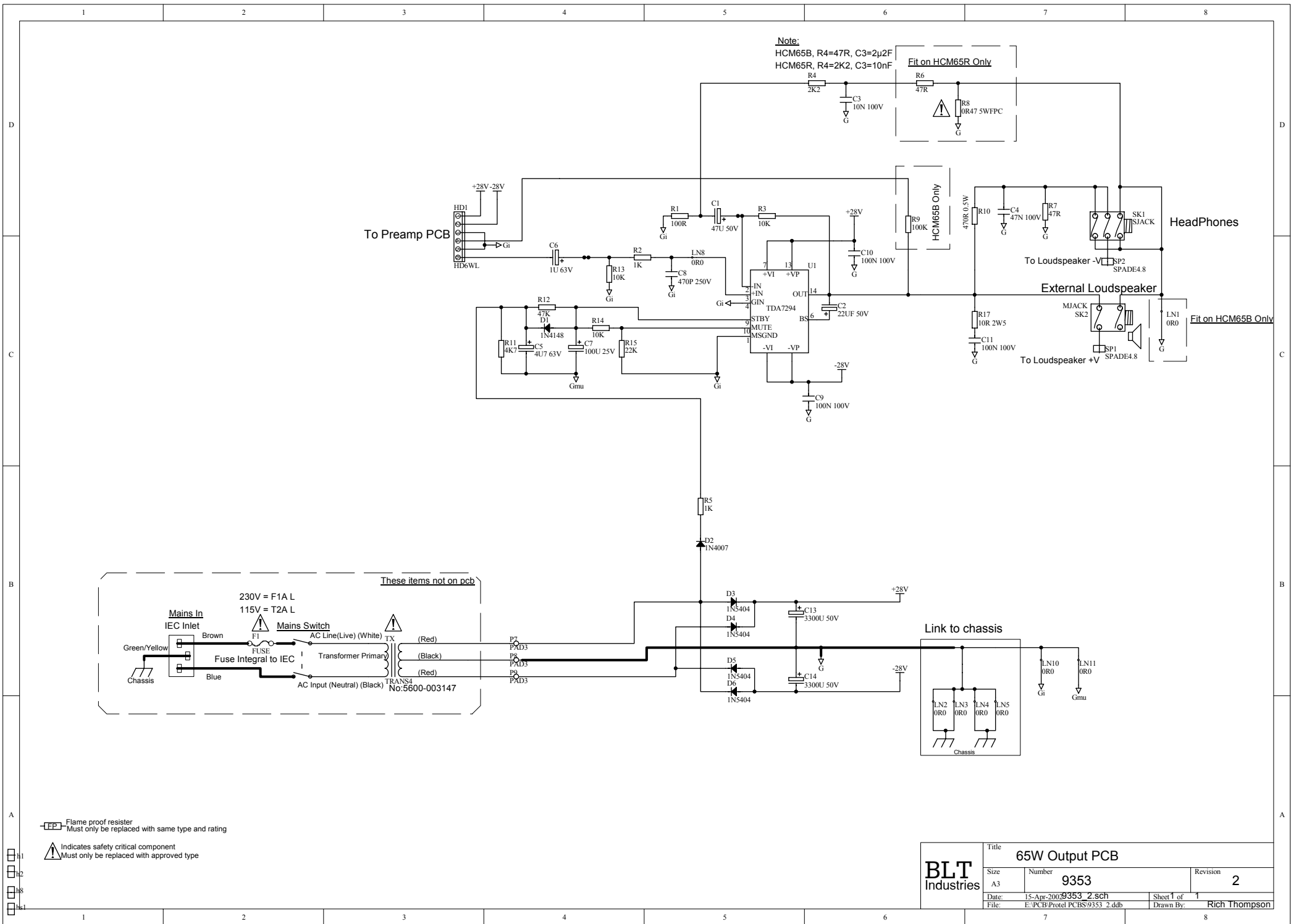
**FP** Flame proof resistor  
 Must only be replaced with same type and rating

**!** Indicates safety critical component  
 Must only be replaced with approved type

To PCB 9353  
 Output PCB

Power  
 D11 LED3MMR

Title		CK80 Preamp	
Size	Number	Revision	
A3	9362	2	
Date:	15-Apr-2009	362_2_Sch	Sheet of 1
File:	E:\PCB\Protel PCBs\9362_2.ddb	Drawn By:	Rich Thompson



Flame proof resistor  
 Must only be replaced with same type and rating

Indicates safety critical component  
 Must only be replaced with approved type

<b>BLT Industries</b>	Title <b>65W Output PCB</b>	
	Size A3	Number <b>9353</b>
	Date 15-Apr-2002 <b>9353_2.sch</b>	Revision <b>2</b>
	File E:\PCB\Protel\PCBS\9353_2.ddb	Sheet 1 of 1 Drawn By: <b>Rich Thompson</b>