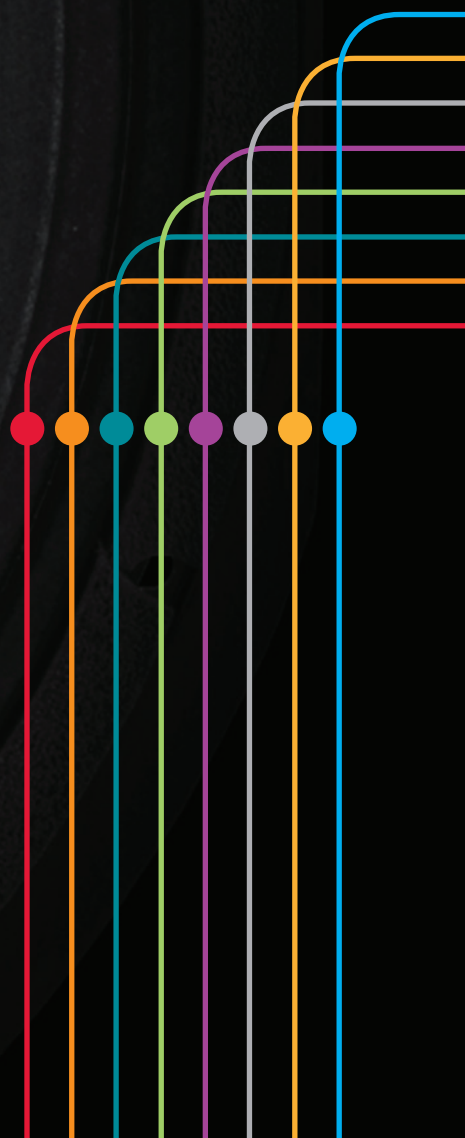




FANE

Guitar Speakers



The sound that started a revolution...

FANE was founded in 1958 at the birth of rock and roll. In the early 1960s with the advent of electronically amplified musical instruments **FANE** took the decision to specialise in high power loudspeaker manufacture. We became quickly established as the largest UK manufacturer supplying more than 75% of all speakers used by UK manufacturers at this time.

FANE professional audio components represent the ultimate in advanced design technology, superlative performance and outstanding durability. Every product is designed according to the most up-to-date developments in materials and built to a standard which ensures that its original performance excellence will be retained indefinitely.

FANE specialise in professional products for professional people. Years of experience in the design and manufacture of power speakers for many of the most famous names in high quality musical instrument amplification, studio installations and sound reinforcement systems have culminated in a range of professional audio products of unrivalled quality and reliability matched with outstanding specification and performance for every audio application.

Our comprehensive range of components deliver upon the **FANE** principles of creating loudspeakers of matchless quality and performance.

FANE continues to this day to manufacture loudspeakers in West Yorkshire, England.





GUITAR SPEAKERS



FANE Guitar Speakers

....close your eyes and drift back to another era, it's the sixties and the birth of British backline amplification. The dawn of British rock legend and the sound that was the footprint of a generation.

More music from this era than any other has achieved cult status, with the bands that created the songs and styles being written into folklore. This has served as inspiration for performers ever since.

Hiwatt, Jennings, Sound City, WEM, Vox and Laney were just some of the legendary British brands that equipped their cabinets with **FANE** and with it the signature to iconic British tone.

Pioneers and originators of the first guitar loudspeaker in the world to be fitted with a fibreglass voice coil, the first to reach a power rating of 100 watts and the first to achieve a sound pressure level in excess of 100dB, **FANE** revolutionised the rock guitar loudspeaker.

Renowned the world over and performed through by legendary British bands, The Who, Rolling Stones, Pink Floyd and many, many more.

Tones and sounds that forged a generation, **FANE's** guitar loudspeakers from their heritage have become much sought after by guitarists searching for their unique tonal quality. Fast forward to the new millennium and those legendary guitar speakers are back! Faithful to the original blueprints and incorporating the same British manufactured cones and made in exactly the same way as the originals forty years ago we have the new generation of **FANE** guitar loudspeakers.

*Recapture the magic and sheer quality of **FANE** with a carefully selected and crafted range of guitar loudspeakers that we hope inspires a new generation seeking the ultimate in tone!*





GUITAR SPEAKERS



FANE



FANE Axiom Series

.....close your eyes and drift back to another era, it's the sixties and the birth of British backline amplification. The dawn of British rock legend and the sound that was the footprint of a generation.

More music from this era than any other has achieved cult status, with the bands that created the songs and styles being written into folklore. This has served as inspiration for performers ever since.

Hiwatt, Jennings, Sound City, WEM, Vox and Laney were just some of the legendary British brands that equipped their cabinets with **FANE** and with it the signature to iconic British tone.

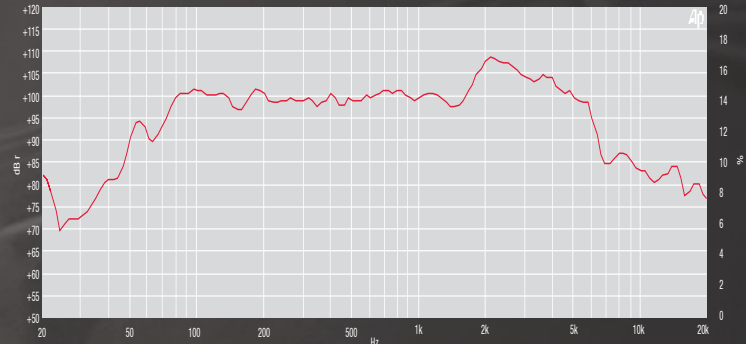
AXA. 12



APPLICATION NOTES:

Big, robust, warm clean tones with a smooth sparkle on the mids and highs. Classic crunchy Alnico tone with smooth compression when driven hard. The AXAs excel in both clean and crunchy situations and do not suffer the hindrance of low power handling found in most new and classic Alnico speakers.

FREQUENCY RESPONSE DATA¹



¹ Half space response measured in a 975 litre sealed box

ELECTRO ACOUSTIC SPECIFICATIONS

Nominal Chassis Diameter	12"
Impedance	4 / 8 / 16 Ω
Power Rating (AES)	100 w
Sensitivity 1w - 1m	101 dB
Chassis Type	Pressed Steel
Voice Coil Diameter	1.75" / 44.45mm
Coil Material	Copper
Magnet Type	Alnico
Magnet Weight	34 oz
Usable Frequency Range	70 Hz - 5.5 kHz
Resonance FS Hz	85
RE Ohms	6.5 Ω

MOUNTING / SHIPPING INFORMATION

Overall Diameter	12.20" / 310 mm
Overall Height	6.69" / 170mm
Magnet Diameter	N/A
Baffle Hole F/M	11.25" / 286 mm
Mounting Hole Qty and Diameter	8 x 7.0 mm
Mounting Hole P.C.D.	11.75" / 298 mm
Nett Weight	9.4lb / 4.25kg
Shipping Weight	11.2lb / 5.05kg
Packing Carton Dimensions	340 x 340 x 222 mm

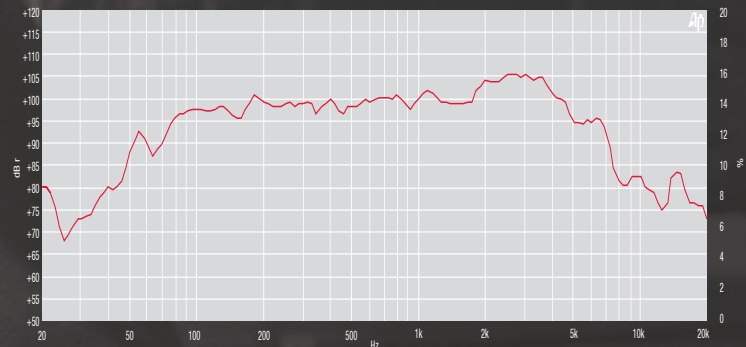
AXA. 10



APPLICATION NOTES:

Big, robust, warm clean tones with a smooth sparkle on the mids and highs. Classic crunchy Alnico tone with smooth compression when driven hard. The AXAs excel in both clean and crunchy situations and do not suffer the hindrance of low power handling found in most new and classic Alnico speakers.

FREQUENCY RESPONSE DATA¹



¹ Half space response measured in a 975 litre sealed box

ELECTRO ACOUSTIC SPECIFICATIONS

Nominal Chassis Diameter	10"
Impedance	4 / 8 / 16 Ω
Power Rating (AES)	100 w
Sensitivity 1w - 1m	100 dB
Chassis Type	Pressed Steel
Voice Coil Diameter	1.75" / 44.45mm
Coil Material	Copper
Magnet Type	Alnico
Magnet Weight	34 oz
Usable Frequency Range	75 Hz - 6 kHz
Resonance FS Hz	90
RE Ohms	6.4 Ω

MOUNTING / SHIPPING INFORMATION

Overall Diameter	10.15" / 258 mm
Overall Height	5.78" / 147mm
Magnet Diameter	N/A
Baffle Hole F/M	9.21" / 234 mm
Mounting Hole Qty and Diameter	4 x 6.5 mm
Mounting Hole P.C.D.	9.72" / 246.88 mm
Nett Weight	8.12 lb / 4.0 kg
Shipping Weight	10 lb / 4.55 kg
Packing Carton Dimensions	295 x 295 x 200mm

AX 15-300B

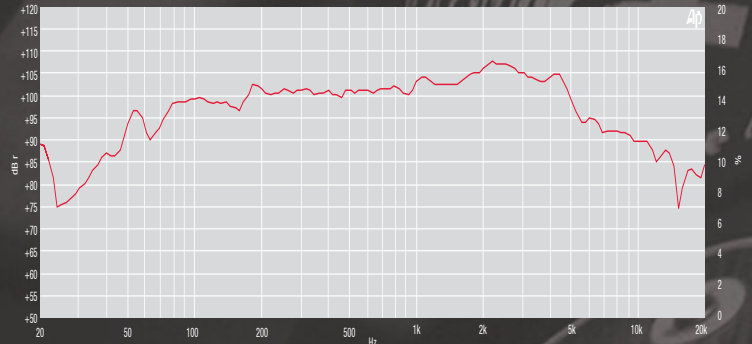
GUITAR SPEAKERS



APPLICATION NOTES:

Renowned for studio quality bass and combos, excellent upper frequency output

FREQUENCY RESPONSE DATA¹



¹ Half space response measured in a 975 litre sealed box

ELECTRO ACOUSTIC SPECIFICATIONS

Nominal Chassis Diameter	15"
Impedance	4 / 8 / 16 Ω
Power Rating (AES)	300 w
Sensitivity 1w - 1m	100 dB
Chassis Type	Cast Aluminium
Voice Coil Diameter	3" / 76.2 mm
Coil Material	Copper
Magnet Type	Ferrite
Magnet Weight	84 oz
Usable Frequency Range	40 Hz - 6.5 kHz
Resonance FS Hz	49
RE Ohms	6.5 Ω

MOUNTING / SHIPPING INFORMATION

Overall Diameter	16" / 406.4mm
Overall Height	5.6" / 142mm
Magnet Diameter	7.16" / 182mm
Baffle Hole F/M	13.85" / 352 mm
Mounting Hole Qty and Diameter	4 x 7.1 mm
Mounting Hole P.C.D.	15.5" / 393.7mm
Nett Weight	9.6 lb / 4.35 kg
Shipping Weight	11.2 lb / 5.0kg
Packing Carton Dimensions	340 x 340 x 222 mm

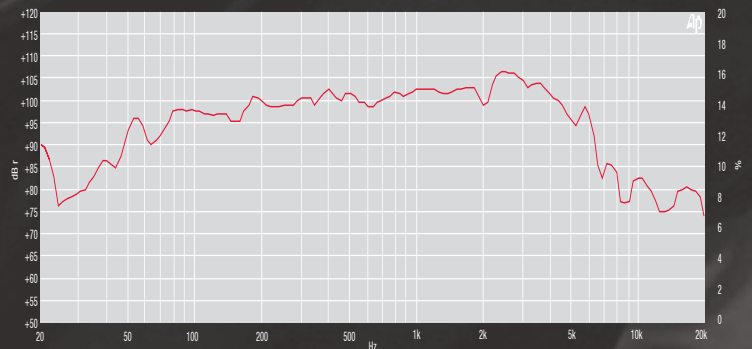
STUDIO 12L



APPLICATION NOTES:

Neutral and uncolored. Very well defined across the spectrum. Super efficient and has unrivaled clarity.

FREQUENCY RESPONSE DATA¹



¹ Half space response measured in a 975 litre sealed box

ELECTRO ACOUSTIC SPECIFICATIONS

Nominal Chassis Diameter	12"
Impedance	4 / 8 / 16 Ω
Power Rating (AES)	200 w
Sensitivity 1w - 1m	102 dB
Chassis Type	Cast Aluminium
Voice Coil Diameter	2.5" / 63.7 mm
Coil Material	Copper
Magnet Type	Ferrite
Magnet Weight	82 oz
Usable Frequency Range	45 Hz - 7 kHz
Resonance FS Hz	49
RE Ohms	5.2 Ω

MOUNTING / SHIPPING INFORMATION

Overall Diameter	13" / 330 mm
Overall Height	5.51" / 140 mm
Magnet Diameter	7.16" / 182mm
Baffle Hole F/M	
Mounting Hole Qty and Diameter	8 x 7.0 mm
Mounting Hole P.C.D.	11.75" / 298 mm
Nett Weight	17 lb / 7.7 kg
Shipping Weight	19 lb / 8.6 kg
Packing Carton Dimensions	340 x 340 x 222 mm



GUITAR SPEAKERS



FANE Medusa Series

The unique sound of legendary rock guitarists of the sixties rock scene stemmed from the long extinct cobalt magnet speaker with its' fragile paper voice coil, which gave the ideal mix of tonal nuance and overdrive harmonics. Increasing costs and higher power demand saw the permanent demise of these iconic speakers, a sound still highly sought after today.

Despite many attempts, no truly successful replacement has been produced, until now... The **FANE** Medusa Series recreates these iconic tones and has produced speakers which faithfully recreates, with power and economy, the subtle tonal colours and overdrive characteristics of the most sought after sound of all time.

Recapture that special British guitar sound of the sixties rock era. Play again that unique and distinctive sound of the legendary giants of rock music, a new breed with an old style.

Let Medusa turn you to Rock!



MEDUSA 150



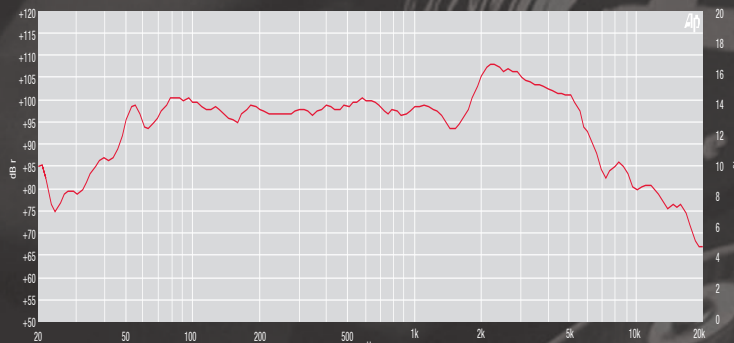
GUITAR SPEAKERS



APPLICATION NOTES:

Big tight low end that is well defined. Smooth mids and high end without losing definition.

FREQUENCY RESPONSE DATA¹



¹ Half space response measured in a 975 litre sealed box

ELECTRO ACOUSTIC SPECIFICATIONS

Nominal Chassis Diameter	12"
Impedance	4 / 8 / 16 Ω
Power Rating (AES)	150 w
Sensitivity 1w - 1m	103 dB
Chassis Type	Pressed Steel
Voice Coil Diameter	2" / 50.8mm
Coil Material	Copper
Magnet Type	Ferrite
Magnet Weight	50 oz
Usable Frequency Range	80 Hz - 6.2 kHz
Resonance FS Hz	84
RE Ohms	6.3 Ω

MOUNTING / SHIPPING INFORMATION

Overall Diameter	12.20" / 310 mm
Overall Height	5.11" / 130mm
Magnet Diameter	6.10" / 155mm
Baffle Hole F/M	11.25" / 286 mm
Mounting Hole Qty and Diameter	8 x 7.0 mm
Mounting Hole P.C.D.	11.75" / 298 mm
Nett Weight	9.02 lb / 4.15 kg
Shipping Weight	10.8 lb / 4.8 kg
Packing Carton Dimensions	340 x 340 x 222 mm

MEDUSA 150C

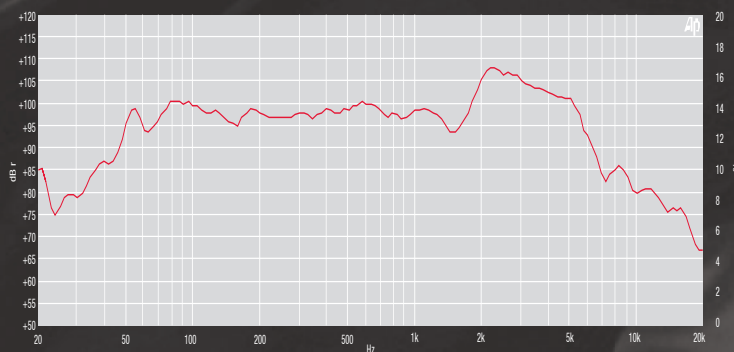
FANE



APPLICATION NOTES:

Cast Chassis. Smooth low end, smooth mid range, good high end response. Great for combos, 1&2 x 12 and Lead Guitar.

FREQUENCY RESPONSE DATA¹



¹ Half space response measured in a 975 litre sealed box

ELECTRO ACOUSTIC SPECIFICATIONS

Nominal Chassis Diameter	12"
Impedance	4 / 8 / 16 Ω
Power Rating (AES)	150 w
Sensitivity 1w - 1m	103 dB
Chassis Type	Cast Aluminium
Voice Coil Diameter	2" / 50.8mm
Coil Material	Copper
Magnet Type	Ferrite
Magnet Weight	50 oz
Usable Frequency Range	80 Hz - 6.2 kHz
Resonance FS Hz	84
RE Ohms	6.3 Ω

MOUNTING / SHIPPING INFORMATION

Overall Diameter	13" / 330 mm
Overall Height	5.39" / 137 mm
Magnet Diameter	6.10" / 155mm
Baffle Hole F/M	11.03" / 281 mm
Mounting Hole Qty and Diameter	4 x 5.5 mm
Mounting Hole P.C.D.	12.5" / 317.5mm
Nett Weight	9.4lb / 4.25kg
Shipping Weight	11lb / 5.0kg
Packing Carton Dimensions	340 x 340 x 222 mm

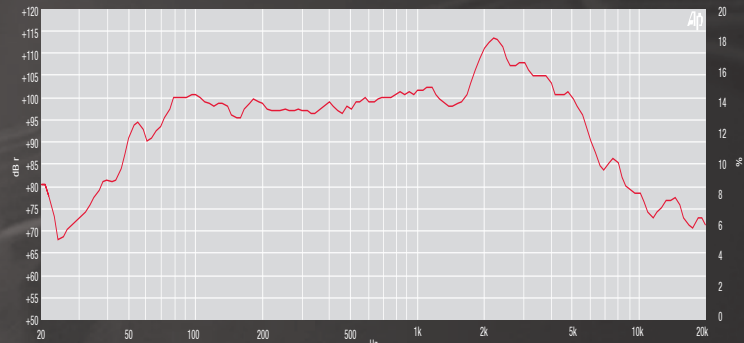
MEDUSA 100



APPLICATION NOTES:

Big low end with punchy mids and a pleasing sizzle on the top end. Very British in nature.

FREQUENCY RESPONSE DATA¹



¹ Half space response measured in a 975 litre sealed box

ELECTRO ACOUSTIC SPECIFICATIONS

Nominal Chassis Diameter	12"
Impedance	4 / 8 / 16 Ω
Power Rating (AES)	100 w
Sensitivity 1w - 1m	102 dB
Chassis Type	Pressed Steel
Voice Coil Diameter	1.5" / 38.1mm
Coil Material	Copper
Magnet Type	Ferrite
Magnet Weight	50 oz
Usable Frequency Range	80 Hz - 6.5 kHz
Resonance FS Hz	64
RE Ohms	6.4 Ω

MOUNTING / SHIPPING INFORMATION

Overall Diameter	12.20" / 310 mm
Overall Height	5.0" / 127mm
Magnet Diameter	6.10" / 155mm
Baffle Hole F/M	11.25" / 286 mm
Mounting Hole Qty and Diameter	8 x 7.0 mm
Mounting Hole P.C.D.	11.75" / 298 mm
Nett Weight	8.14 lb / 4.0 kg
Shipping Weight	10.4 lb / 4.65 kg
Packing Carton Dimensions	340 x 340 x 222 mm

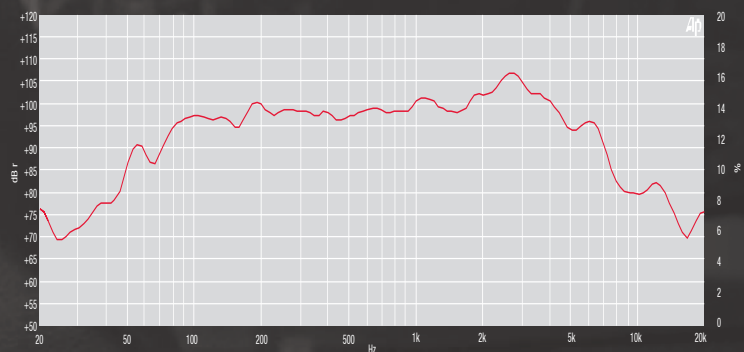
MEDUSA 10-75



APPLICATION NOTES:

Good low end, pronounced mid range, warm top end. Works well in 2 x10 and Combos.

FREQUENCY RESPONSE DATA¹



¹ Half space response measured in a 975 litre sealed box

ELECTRO ACOUSTIC SPECIFICATIONS

Nominal Chassis Diameter	10"
Impedance	4 / 8 / 16 Ω
Power Rating (AES)	75 w
Sensitivity 1w - 1m	98 dB
Chassis Type	Pressed Steel
Voice Coil Diameter	1.75" / 44.45mm
Coil Material	Copper
Magnet Type	Ferrite
Magnet Weight	38 oz
Usable Frequency Range	75 Hz - 6 kHz
Resonance FS Hz	90
RE Ohms	6.4 Ω

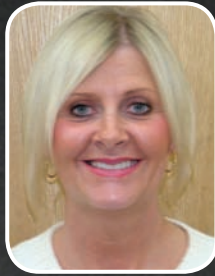
MOUNTING / SHIPPING INFORMATION

Overall Diameter	10.15" / 258 mm
Overall Height	5.19" / 132mm
Magnet Diameter	5.21" / 132 mm
Baffle Hole F/M	9.21" / 234 mm
Mounting Hole Qty and Diameter	4 x 6.5 mm
Mounting Hole P.C.D.	9.72" / 246.88 mm
Nett Weight	6.12 lb / 3.10 kg
Shipping Weight	7.1 lb / 3.5 kg
Packing Carton Dimensions	295 x 295 x 200mm

FANE Company Contacts



Arthur Barnes
Chairman



Amanda Barnes
Director
amanda@fane-international.com



Mark Barnes
Director
mark@fane-international.com



Neil Barnes
Director
neil@fane-international.com



Mark Oldroyd
Technical Director
mark.oldroyd@fane-international.com



Daniel Barnes
Sales
daniel@fane-international.com



FANE INTERNATIONAL LTD.
Sovereign House
Gilcar Way
Wakefield Europort
Castleford WF10 5QS
United Kingdom

Tel: +44 (0)1924 224 618
Fax: +44 (0)1924 899 166
Email: info@fane-international.com
www.fane-international.com



FANE INTERNATIONAL LTD.

Sovereign House

Gilcar Way

Wakefield Europort

Castleford WF10 5QS

United Kingdom

Tel: +44 (0)1924 224 618

Fax: +44 (0)1924 899 166

Email: info@fane-international.com

www.fane-international.com